



NATCANSAT

National Clinical Analysis and Specialised Applications Team



ENHANCED RECOVERY PROGRAMME (ERP) Online Tool

**5th ERAS UK Conference
6th November 2015**



NATCANSAT

National Clinical Analysis and Specialised Applications Team



BACKGROUND

- Commissioned by DH, funded by NCAT later NHSIQ
- Data Collection began Jan 2010, piloted 2009
- 60,000 Patient Records entered, 107 Hospital Sites, 77 Trusts registered.
- Online tool (www) ∴ anonymised data
- Benchmarked Reports - Compliant against Pathway
- From 2014 self funded by Trusts £2,995 per annum.



NATCANSAT

National Clinical Analysis and Specialised Applications Team



The screenshot shows the website interface for the Enhanced Recovery Programme. At the top, there is a navigation bar with the Department of Health logo and the title 'Enhanced Recovery Programme'. Below this is a 'Login' button and a 'Trust/Organisation' dropdown menu. A 'Please Note' section provides information about site updates and contact details. The main content area contains several links: 'Forgotten your password?', 'ER Data Definitions (January 2011)', 'Patient ID Generator', 'Patient ID Generator for Network Installation', 'Enhanced Recovery Compliance against elements of ER pathway by Specialty', and 'FAQs'. On the right side, a large light blue arrow points to three callout boxes containing the text: 'Benchmark, Outcome & Compliance Reporting', 'ER Pathway Information', and 'Data Collection'.

Benchmark, Outcome
& Compliance
Reporting

ER Pathway
Information

Data Collection



NATCANSAT

National Clinical Analysis and Specialised Applications Team



LOGIN ONLINE TOOL

<https://www.natcansatmicrosite.net/enhancedrecovery>

Trust / Organisation – The Clatterbridge Cancer Centre NHS Foundation Trust

Site – The Clatterbridge Cancer Centre

User – TestAccount

Password – ertest

neal.jones@clatterbridgecc.nhs.uk

Helpdesk 0870 840 8033 – follow instructions for helpdesk co-ordinator

Direct Dial 0151 482 7736



NATCANSAT

National Clinical Analysis and Specialised Applications Team



The screenshot displays the YouTube channel page for NHS NATCANSAT. The channel name is prominently displayed at the top, along with a 'Subscribe' button. Below the channel name, there are navigation tabs for Home, Videos, Playlists, Channels, Discussion, and About. The main content area features a list of three videos, each with a thumbnail, title, and description. The first video is 'Enhanced Recovery - Entering Data - Section 1', the second is 'Enhanced Recovery - Logging Onto The Toolkit', and the third is 'Enhanced Recovery - User Registration'. The page also includes a sidebar on the left with navigation options like Home, My Channel, Subscriptions, and Playlists. At the bottom, there is a footer with the YouTube logo, language settings (English (UK)), country (United Kingdom), and various utility links like About, Press, Copyright, Creators, Advertise, Developers, and YouTube.



DATA COLLECTION

➤ Data Entry across multiple pages / screens

- Patient Demographics
- Admission
- Patient Experience
- Readmission/Reoperation
- Pathway Compliance
- Surgical Risk
- Mortality and morbidity score (POMS & POSSUM)

➤ Local Anonymisation using another linked tool.



DATA COLLECTION

This is a typical online data entry screen consisting of several key elements.

Department of Health
Enhanced Recovery Programme

Logged user: NealJ
 THE CLATTERBRIDGE CANCER CENTRE NHS FOUNDATION TRUST
 THE CLATTERBRIDGE CANCER CENTRE

Main Menu Section 1 Section 2 Risk POMS POSSUM Downloads Log-out

Add Delete Save

- 1898sh3 (39)
- 1Colorectal (80)
- 2Colorectal (70)
- 2MSK (102)
- 387asj2 (0)
- 3Breast (91)
- 3Colorectal (72)
- 4Colorectal (120)
- DataUploadTest (9)
- Gynae (20)
- Urology1 Cystec (2)
- Urology2 Other (11)
- Urology3 prosta (25)

Demographics

Audit Number *

Enter Date of Birth and Date of Operation, then click Generate Age button:

Date of Birth

Date of Operation

Age at Date of Operation *

Gender *

Further information for lo

Admission

Operation Group *

Type of Operation +

Was the operation commenced laparoscopically?

Diagnosis: ICD10 Code

Diagnosis: ICD10

Did the patient have a stoma, colostomy or an ileostomy formed during the operation?

Date of Admission

Time of Admission +

Date of Operation

Operation Start Time +

Date of Discharge

Time of Discharge +

Length of Stay

ITU Bed Days Used

HDU Bed Days Used

User information.

Patient demographic data is anonymised by using an audit number which is **not patient identifiable** and age at date of operation which is automatically calculated.

This a list of pre populated dummy records that can be clicked. When each is clicked, the record data is viewable in the data entry section.

Areas to enter procedure specific data.



DATA COLLECTED

Records by Year of Operation Date

Year of Operation	Number of Records
2009	286
2010	3,736
2011	13,872
2012	20,667
2013	16,681
2014	5,032
2015	539
No Operation Date	135
Total	60,948

Records by Operation Group

Operation Group	Number of Records
Musculoskeletal	26,903
LGIT	16,934
Gynaecology	11,067
Urology	2,155
Breast	340
UGIT	62
Other	3,487
Total	60,948

Decline in data entry once the national funding ended.

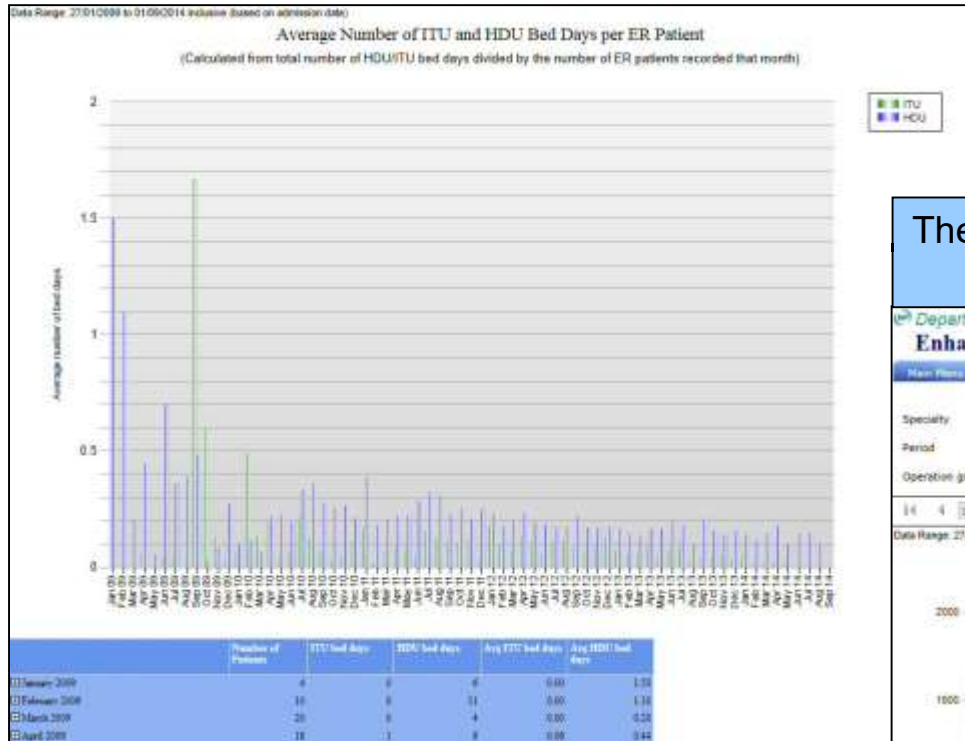
Data upload facility to upload batch files

Operation group has sub sections and in addition to this there are different types of operation within each subsection.

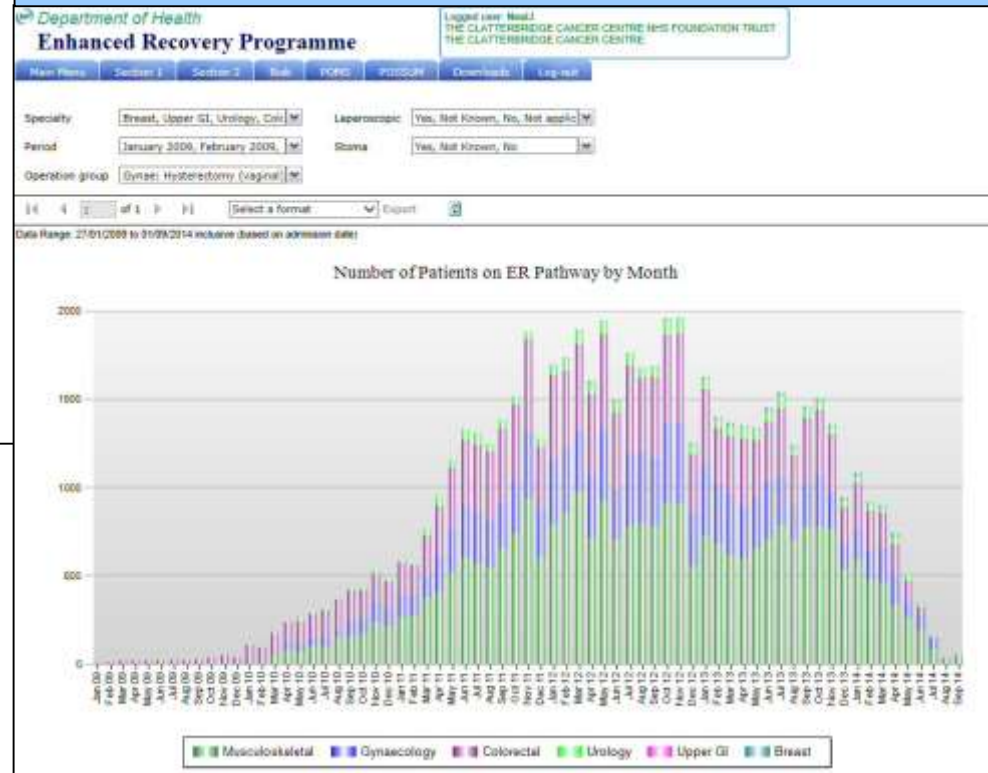
EXAMPLES OF ONLINE REPORTS



ITU and HDU bed days per patient by month and year.



The number of patients entered on to the online toolkit by month and year with operation group



All reports are exportable into a document type of choice, e.g. Excel, PDF. Reports can be given parameters which offer drill down functionality based on the parameter selections made.



NATCANSAT

National Clinical Analysis and Specialised Applications Team



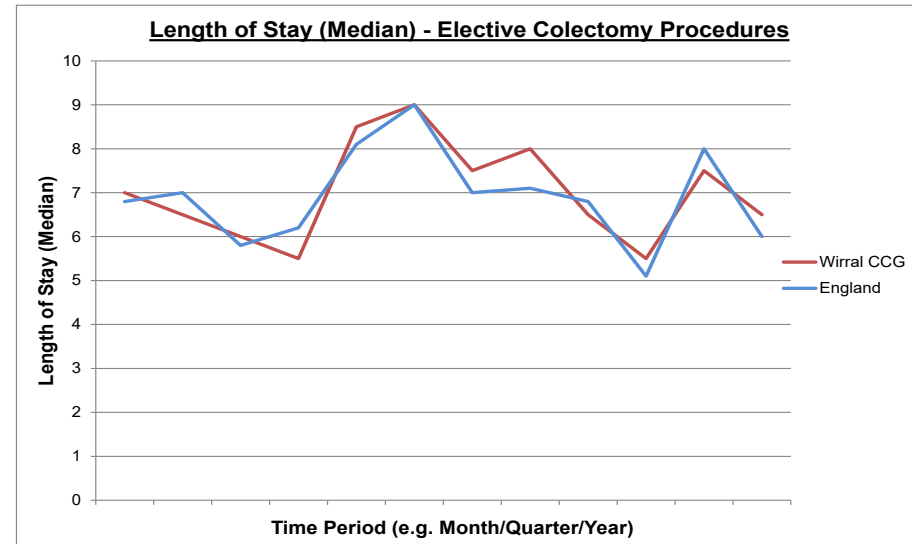
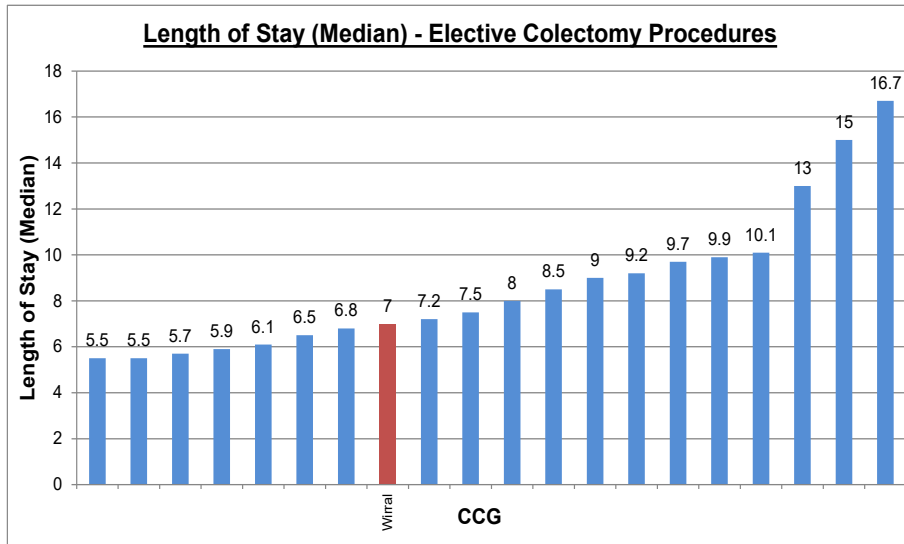
NATIONAL ERP REPORTS

ERP procedures monitored using HES data:

- Breast mastectomy or excision without immediate reconstruction
- Elective colectomy
- Excision of rectum
- Hysterectomy
- Cystectomy
- Prostatectomy
- Hip and knee replacement
- Elective gastrectomy
- Oesophogastrectomy
- Partial excision of liver
- Excision of lung
- Vascular aortic abdominal aneurysm



NATIONAL ERP REPORTS



Outcomes reported - Length of Stay, Readmissions, Re-surgery, Complications



NATCANSAT

National Clinical Analysis and Specialised Applications Team



POLICIES INFORMED BY TOOL

23 Hour Breast

Same Day Hip and Knee replacement

Carbohydrate loading

Pre operative stoma education



NATCANSAT

National Clinical Analysis and Specialised Applications Team



FUTURE DEVELOPMENT

- Include Non elective surgery
- More interactive tool – feedback button
- Additional procedures and codes
- Continue to use historical data
- Dashboard with key performance indicators
- Benchmark with statistical neighbour functionality
- Integrate HES data reports



DASHBOARD

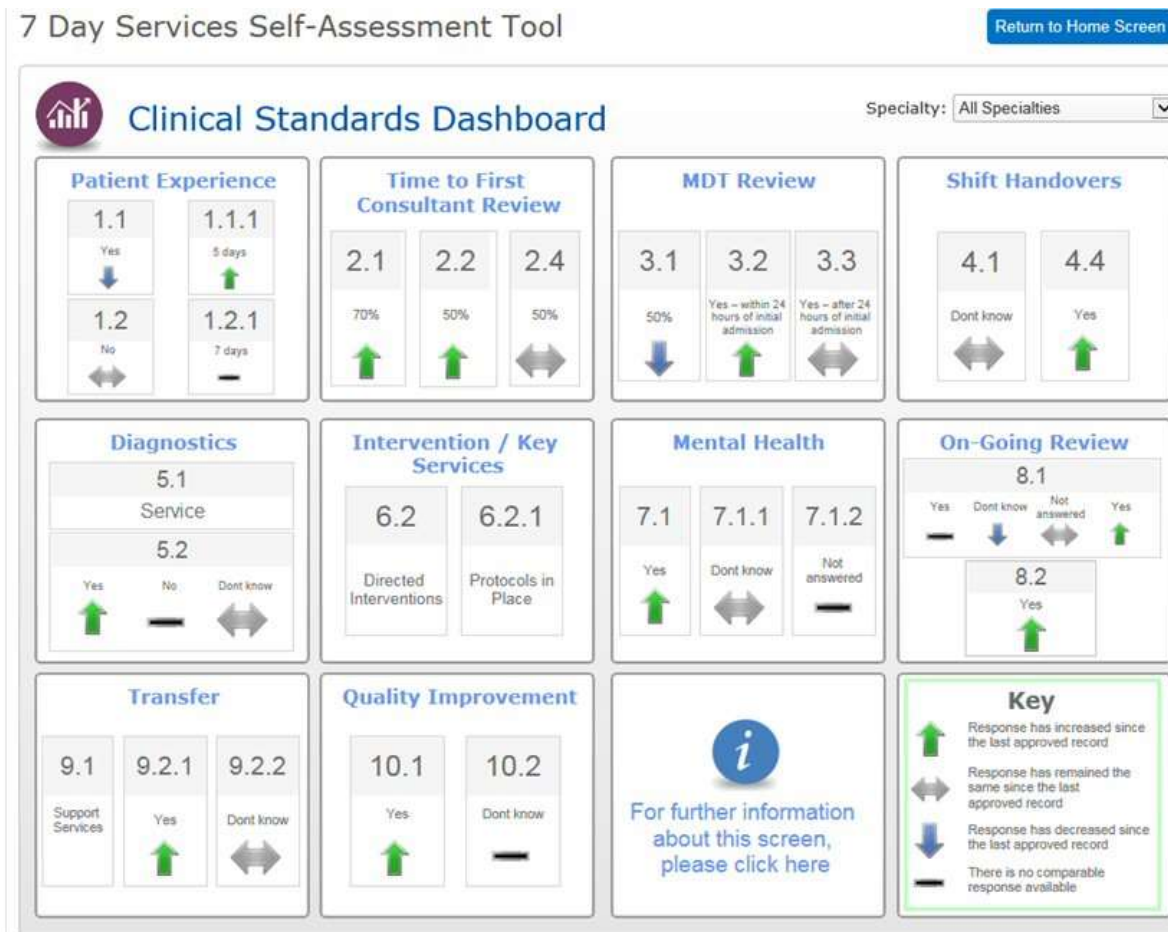
- Navigation Page with large mobile friendly clickable icons

<p>Your Records Select a record to complete. View completed records.</p> <p>Current record: 10 days until approval allowed.</p>	<p>Your Dashboard View your progress. Benchmark against others.</p> 	<p>Your Reports Download your data to develop reports and share with others.</p> 	<p>FAQs View answers to frequently asked questions about the 7DSAT.</p> 
<p>Account Details View/edit your personal details. Approver administration.</p> 	<p>Useful Information 7DSAT Documents. Events, publications and case studies, films, webinars.</p> 	<p>Key Contacts Service Improvement Support. 7DSAT Technical Support. 7 Day Services Support.</p> 	<p>Log Out End your session and return to the login screen.</p> 



Dashboard Example

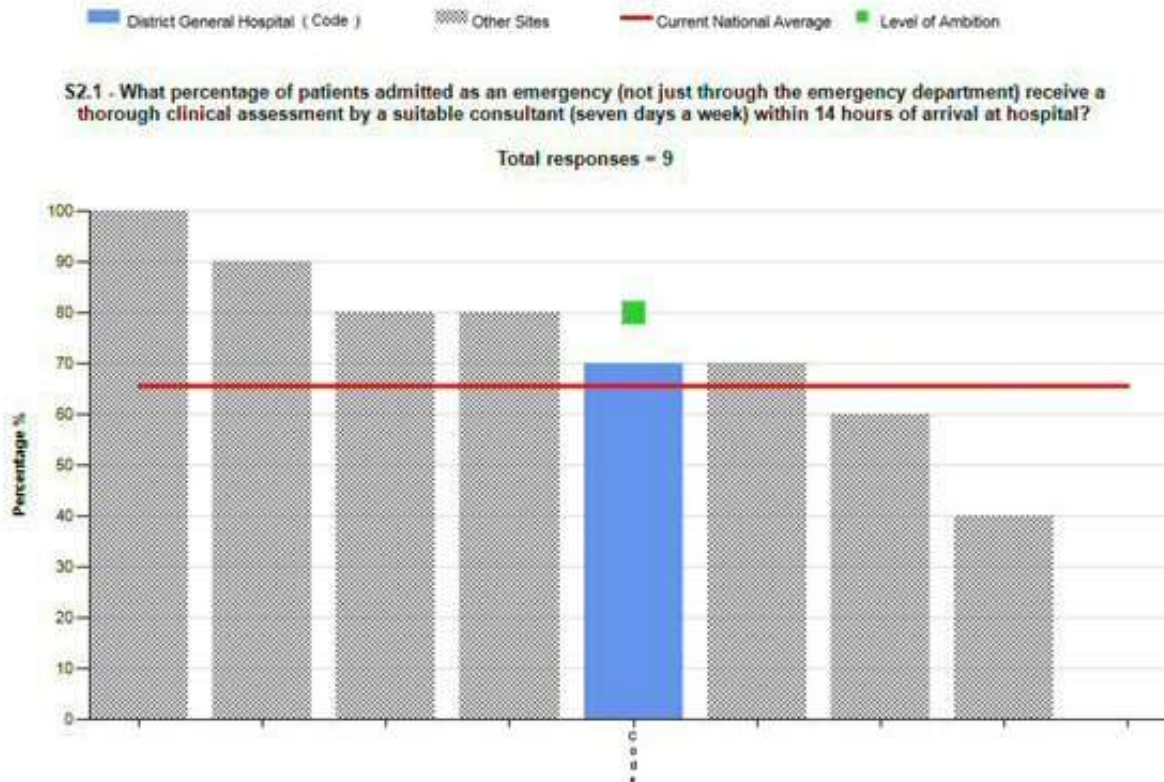
KPI Dashboard from the 7 Day Services Self Assessment Toolkit





Benchmark reports with National Average & Statistical Neighbour functionality

Benchmark Report





NATCANSAT

National Clinical Analysis and Specialised Applications Team



Enhanced Recovery Programme Toolkit Produced By:

**National Clinical Analysis and Specialised Applications
Team (NATCANSAT)**

Website: www.natcansat.nhs.uk

Helpdesk: 0870 840 8033

Email: ccf-tr.natcansat@nhs.net